



**MODEL 'BR4504, BR6504'  
SOLID FRONT PROCESS GAUGE WITH ALUMINUM CASE**

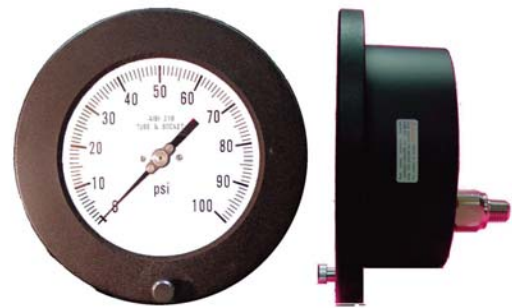
The Blue Ribbon model 4504 and 6504 is a solid front process gauge with an aluminum front flange safety case with a black enamel finish. The aluminum black wrinkle enamel coated ring makes these gauges wells suited for panel board applications. The front screw lets users open the window and permits easy panel installation. There is a solid wall between the pressure sensing unit and the window, which provides greater safety for personnel monitoring the gauges.

The bourdon tube with socket may be selected in brass, stainless steel or monel material. If choose, for example, stainless steel, then all the internal parts such as bourdon tube, socket, movement, screws, washers, etc. will be stainless steel. The stainless steel sensing element is suitable use in corrosive media and the pressure system is not subject to damage.

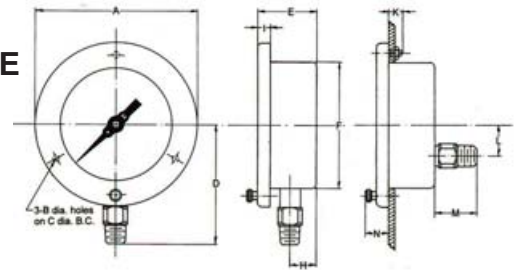
Blue Ribbon gauge models 4504 & 6504 are supplied as dry only and available dial sizes are 4½" or 6". The 4½" dial is the standard gauge size. The 6" dial size is used where distance is a factor allowing viewing from a greater distance.

**SPECIFICATIONS:**

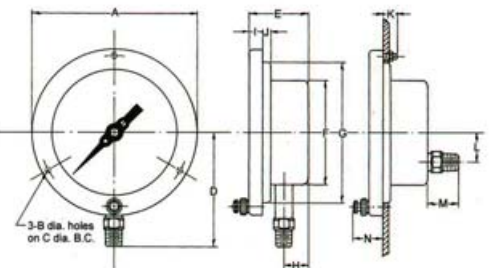
- Solid front with pressure relief opening to ASME B40.1 standard that will protect users from fluid & particle in the event of failure & particle in the event of failure.
- The aluminum case with black wrinkle ring can resist rugged & high temperature environment.
- The stainless steel rotary geared movement reduces friction & corrosion which assures smooth-moving pointer & accurate pressure indication.
- Maximum and minimum pressure stop of movement can be offered to protect against damage caused by sudden vacuum or overpressure.
- Model 4504 and 6504 are lower back connection location with front flange panel mount gauges.



**4½"  
DIAL SIZE  
4504**



**6"  
DIAL SIZE  
6504**



DIAL SIZE	BOURDON TUBE
4½" (115mm) or 6" (150mm)	316-Stainless steel Brass or Monel K-500
CASE & RING	POINTER
Aluminum case & ring with black enamel	Anodized aluminum with black finish
SOCKET MATERIAL	SCALE
316-Stainless steel. Brass or Monel K-500	PSI, kPa, Bar, kg/cm (single or dual scale)
MOUNTING	CONNECTION SIZE
Stem or panel mount	½" or ¼" NPT standard (JIS and BSP available)
WINDOW MATERIAL	ACCURACY
4½" - Polycarbonate 6" - Glass	Grade 2A to ASME B40.1 (Full scale 0.5% accuracy)

DIAL SIZE	A	B	C	D	E	F	G	H	I	J	K	L	M	N
4½" (115mm)	6.181" (157)	0.236" (6)	5.354" (135)	4.488" (114)	2.283" (58)	4.764" (121)	-	0.984" (25)	0.512" (13)	-	0.787" (20)	1.181" (30)	1.614" (41)	0.906" (23)
6" (150mm)	7.563" (192)	¼" - 20UNC	7.008" (178)	5.197" (132)	2.756" (70)	4.764" (121)	6.378" (162)	1.102" (28)	0.669" (17)	0.236" (6)	0.787" (20)	1.339" (34)	1.496" (38)	1.377" (35)